



*New World Systems*<sup>®</sup>

---

**Brand Identity Manual**

---



## Mission

Through the innovative and efficient use of our resources, we perform in an intelligent and ethical way to continuously improve the following results:

- Customers are delighted to highly recommend both our products and services
- Employees are proud to say they work for New World
- Shareholders are satisfied with their investment
- Partners are excited to be on our team
- Suppliers favor us as their best account

## Company Overview

### The Public Sector Software Company

New World Systems has provided solutions, including application software, hardware, training and support, for Local Government and Public Safety agencies since 1981. New World's longevity, stability, financial strength, experience, and specialization in the public sector uniquely qualify us as a long-term partner for our customers. We have a long-standing track-record of meeting our customers' changing needs and are guided by a continuous improvement philosophy that provides long-term value to our customers.

## Company Background

Headquartered in Troy, Michigan, with regional sales and support offices nationwide, New World is privately held and employee-owned. Founded by its president, Larry D. Leinweber, New World employs more than 400 people. Mr. Leinweber has over 30 years of hands-on and strategic management experience in the technology and software development industry.

New World Systems has never been acquired or merged — a rarity in this evolving marketplace. We take great pride in the fact that we have designed and developed all of our core applications internally. Many software vendors who have acquired other companies have found compatibility issues, and deserted communities with outdated software that is no longer supported. In contrast, we continue to aggressively enhance our existing products and have invested over \$125 million in recent years to develop our Microsoft® Windows and Microsoft.NET™ platform solutions.

At New World, our commitment to service means we provide a strong partnership that begins before the installation of the software and lasts through the life of your solution. Experienced project managers, on-site installation and training, and ongoing support services ensure that our customers realize the full benefit of their New World software solution.

Serving more than 2,000 public sector organizations nationwide, New World is the established leader in public sector software.



# AEGIS

## Word Origin

Latin from Greek aigis, 'shield of Zeus.'

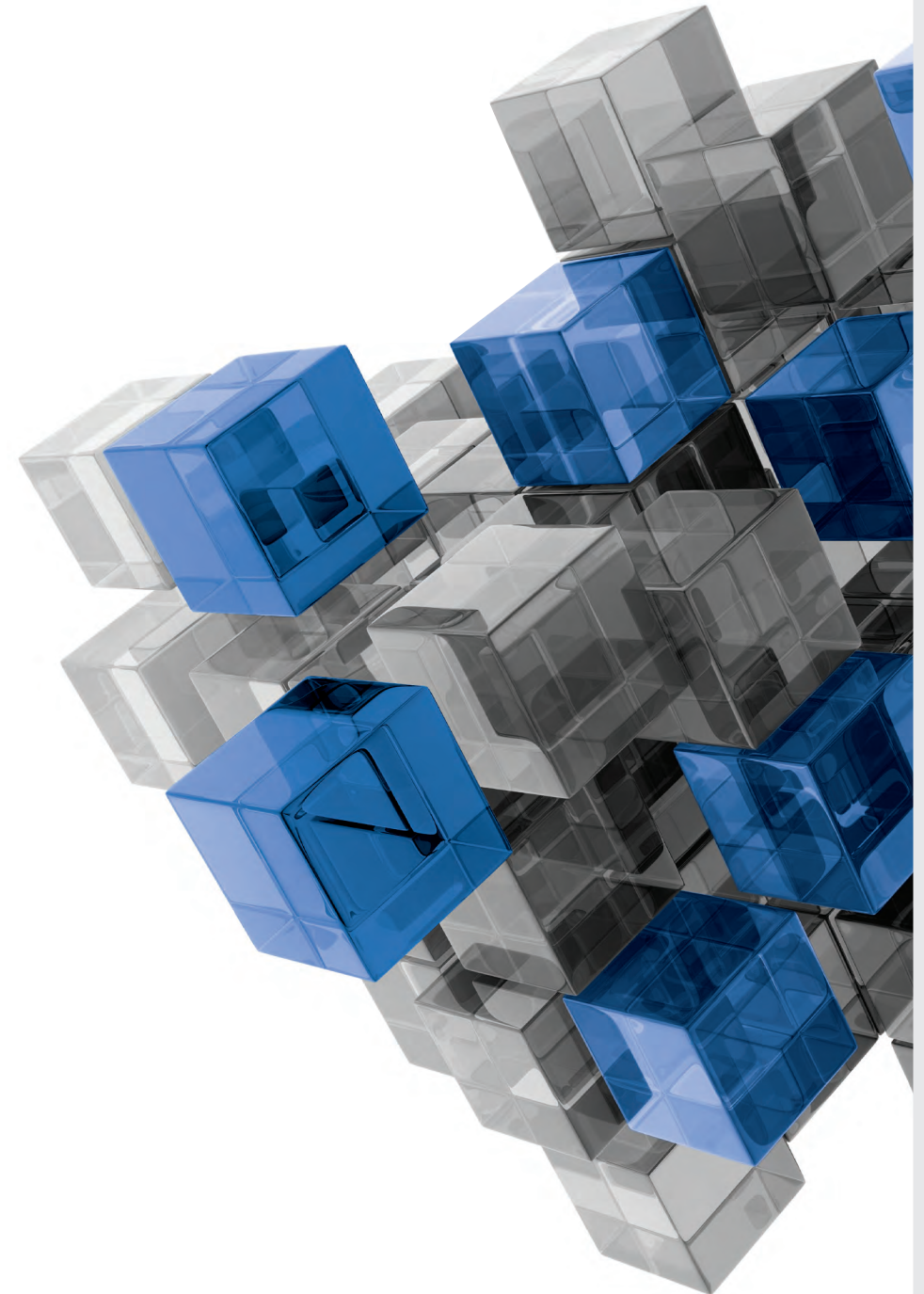
## Phonetic Spelling

[ee-jis]

## Product Overview

New World Systems' Aegis Public Safety software is a fully unified and comprehensive solution for Law Enforcement, Fire and EMS, including Computer Aided Dispatch (CAD), Records Management, Mobile Computing, Corrections Management, Web-based Information Sharing and Decision Support. Each module integrates with each other, working off of a common database and providing full functionality between modules, reducing data entry. The Aegis software provides fast, efficient dispatching, and quick access to records, reports and actionable information from an agency's database. The suite is available on either the Microsoft® platform.

- Computer Aided Dispatch
- Records Management
- Mobile Computing
- Corrections Management
- Decision Support & Dashboards





# LOGOS

## Word Origin

“Word,” “reason,” or “plan”. In Greek philosophy and theology, the divine reason implicit in the cosmos, ordering it and giving it form and meaning.

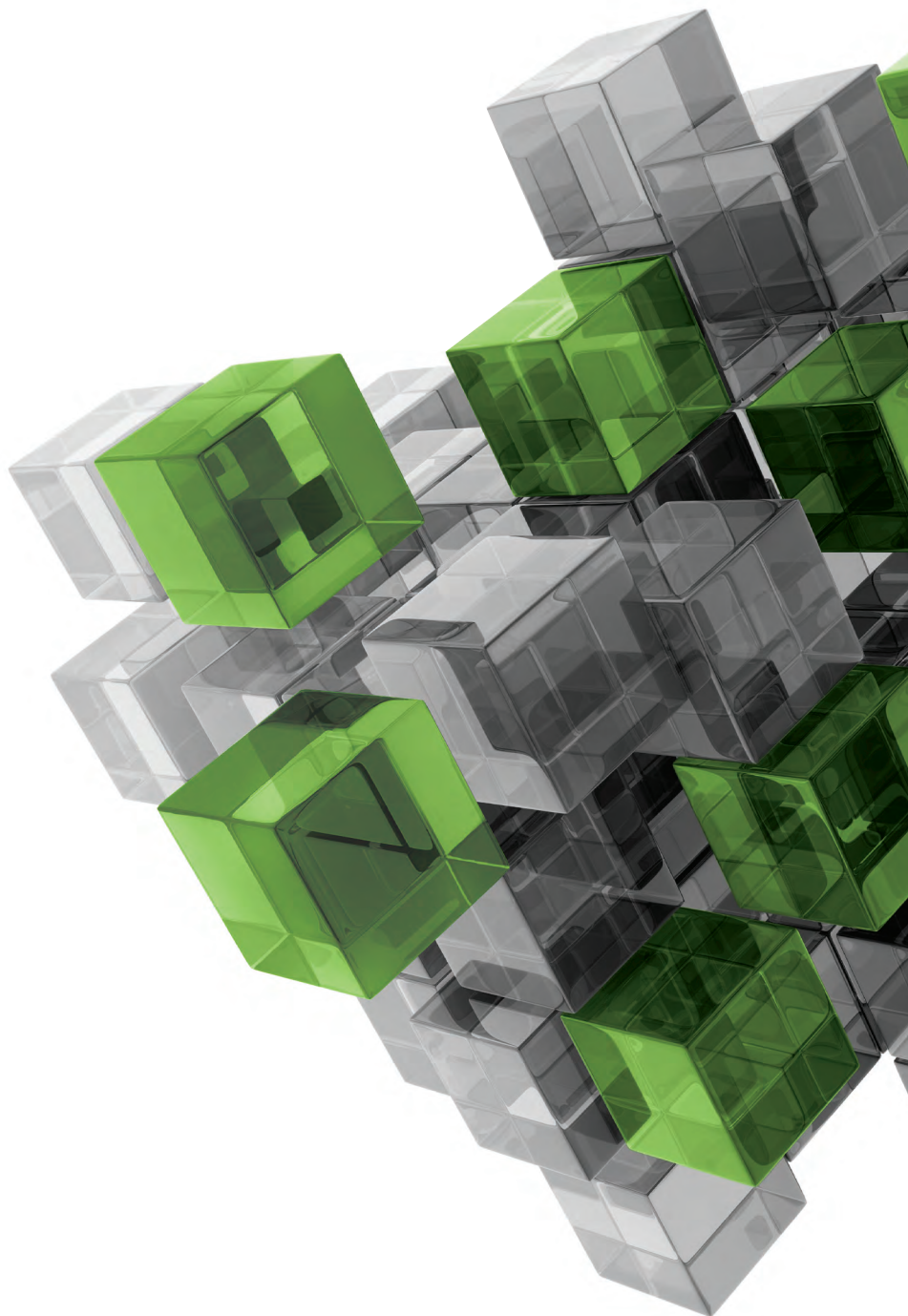
## Phonetic Spelling

[log-os]

## Product Overview

New World’s Logos™ suite of Public Administration software satisfies the fund accounting needs of city and county governments, providing modules for financial management, human resources, payroll, utility information, community development, eGov capabilities and Business Analytics & Dashboards. While Logos is a unified suite of software, it is completely modular, so organizations only need to license the modules they currently require, and implement additional modules as needs arise. The system runs on the browser-based Microsoft.NET platform.

- Financial Management
- Payroll & Human Resources Management
- Utility Management
- Community Development
- eSuite Self-Service
- Decision Support & Dashboards





## **What Are These Guidelines For?**

They are to help us ensure that the way we present New World is always:

### **Professional:**

All the materials we produce must look as if they come from New World. Strong attention to detail will reflect adequately on our brand.

### **Consistent:**

Whenever and wherever people come into contact with New World, we want to create a clear and coherent impression. If our brand is consistent, we are less likely to be confused with a competitor. We will be able to keep hold of loyal customers and avoid being associated with lesser brands.

### **Distinct:**

For maximum impact, our communications should convey what makes New World unique.

We ask that each New World employee work with us to uphold these standards. Our continuing success as a leader in public sector software is best told through consistent application of identity standards.



CONTENTS  
**Inside the Brand**

---

02	<b>Introduction</b>	24	<b>Print</b>
03	Aegis	25	Brochures
04	Logos	29	Flyers
05	Brand Guidelines	30	Case Studies
		31	Trifold Brochures
06	<b>Contents</b>	32	<b>Web</b>
07	<b>Logo</b>	33	Corporate Website
08	Primary	34	Email Templates
09	Secondary	35	Landing Pages
10	With Tagline	37	PowerPoint Templates
11	Alternative Mark Colors	38	Social Media
12	Sizing & Proportion		
13	Clear Space	40	<b>Advertising</b>
14	Unacceptable Use	41	Print
15	Legal Requirements	42	Web
16	<b>Brand Colors</b>	43	<b>Extensions</b>
19	<b>Typography</b>	44	Tradeshow Booth
		46	Banner Stands
21	<b>Business System</b>		



# NEW WORLD LOGO



LOGO  
**Primary**

The Primary logo is the main mark for New World. This logo is in full color and is for applications where full color is desired. The Primary logo is also available with the tagline.

The New World logo is a very important asset of the brand. It is also the visual expression of our brand, and as such must be valued and used in accordance with these guidelines.

The Secondary logo should be used on applications where the primary logo will not be legible or fit correctly.

The alternative mark colors should be used when applying the logo to similar color backgrounds as the logo itself.







LOGO  
Secondary

---



*New World Systems*<sup>®</sup>





LOGO  
Tagline

---



*New World Systems*<sup>®</sup>  
*The Public Sector Software Company*



LOGO  
Alternative Mark Colors

---





LOGO

## Sizing and Proportion

Size minimums are noted to ensure that the New World logo is legible and prominent in various media. Our horizontal logo should not be smaller than 1.5" and our vertical logo should not be smaller than 1". If just the brand mark is being used, it should not be smaller than 1/4".

Exception: If the item you are putting the logo onto is smaller than 1" --Such as a pen or pin -- it is acceptable to reduce the size and clear space.





LOGO  
**Clear Space**

The New World logo needs sufficient visual space so that its impact is not degraded. Items such as text, images or graphic elements should be kept away from the logo by a minimum distance of the height of the "N".

In cases where our mark is only being used, clear space should be 1/4 size of the height or width of the mark.



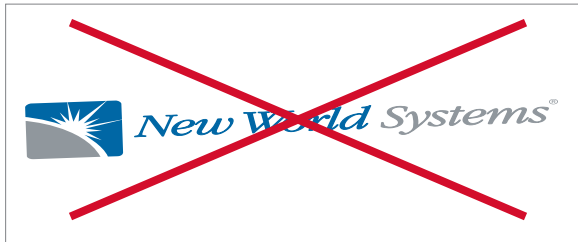


LOGO

## Unacceptable Use

The success of New World Systems brand identity relies on the clarity and consistency with which it is implemented. Distorting or changing the logos reduces its legal protection and diminishes its impact.

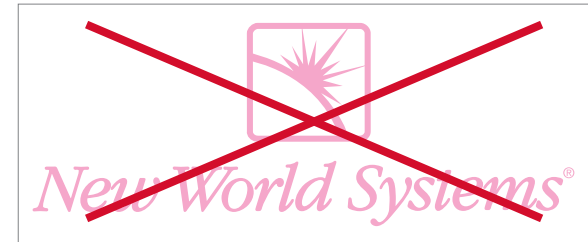
The following examples visualize some potential mistakes that must be avoided. Please note that the following examples apply to all New World marks and should be avoided at all times.



Do not stretch, distort or rotate



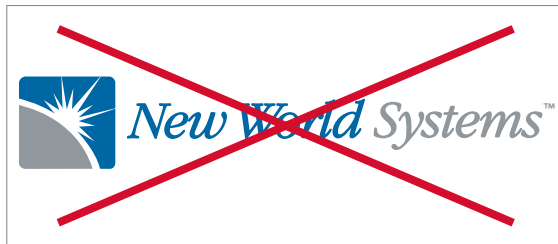
Do not use logo mark with a different font



Do not change the color outside of the approved options



Do not use an outline treatment



Do not use the incorrect trademark



Do not add effects, including a drop shadow, bevel, or glow.



Parcel Service

Parcel  
Owner Name  
Address lake lulu

Advanced Reset New

Parcel Service

- NWS 26283300000041020  
512 LAKE LULU DR  
Debbie L Tennick
- NWS 262833649100000110  
385 LAKE LULU DR  
Charles E Knight
- NWS 262833649100000350  
415 LAKE LULU DR  
James C Bonner
- NWS 262833649100000370  
423 LAKE LULU DR  
Joseph H Parsons
- NWS 262833649100000500  
380 LAKE LULU DR  
Robert M Hines
- NWS 262833649100000510  
390 LAKE LULU DR  
Werner Rosendaht
- NWS 262833649100000520  
400 LAKE LULU DR  
Jimmy Lee Breadwell
- NWS 262833649100000530  
410 LAKE LULU DR  
Wanda May Yanno
- NWS 262833649100000540  
414 LAKE LULU DR  
William G Freeman II
- NWS 262833649100000550  
418 LAKE LULU DR  
William G Freeman

# NEW WORLD BRAND COLORS





## New World White

**C:**0 **M:**0 **Y:**0 **K:**0  
**R:**255 **G:**255 **B:**255  
**HEX:** #ffffff

## New World Grey

**Spot:** Pantone 430 C  
**C:**6 **M:**0 **Y:**0 **K:**47  
**R:**142 **G:**151 **B:**157  
**HEX:** #8f979d

## New World Blue

**Spot:** Pantone 301 C  
**C:**100 **M:**43 **Y:**0 **K:**18  
**R:**0 **G:**103 **B:**166  
**HEX:** #0068A7





## Aegis Blue

**Spot:** Pantone 301 C  
**C:**100 **M:**43 **Y:**0 **K:**18  
**R:**0 **G:**103 **B:**166  
**HEX:** #0068A7

## Logos Green

**Spot:** Pantone 368 C  
**C:**57 **M:**0 **Y:**100 **K:**0  
**R:**122 **G:**193 **B:**67  
**HEX:** #55920A

## K-12 Yellow

**Spot:** Pantone 1235 C  
**C:**0 **M:**29 **Y:**91 **K:**0  
**R:**253 **G:**187 **B:**48  
**HEX:** #f8bd39

## Aegis Fire

**Spot:** Pantone 186 C  
**C:**12 **M:**100 **Y:**92 **K:**3  
**R:**207 **G:**10 **B:**44  
**HEX:** #CE2029



# NEW WORLD TYPOGRAPHY





TYPOGRAPHY  
**Primary**

New World's typographic identity is viable across many applications including print, digital and advertising components. Type selections have been made that best represent the brand of New World.

The typeface family 'Myriad Pro' has been selected for use by the New World brand. If Myriad Pro is not available on your system, Marketing will provide you with a .zip file of the font family.

**Myriad Pro Regular**

ABCDEFGHIJKLMNOPQRSTUVWXYZ  
abcdefghijklmnopqrstuvwxyz  
1234567890!@#\$%^&\*()

**Myriad Pro Italic**

*ABCDEFGHIJKLMNOPQRSTUVWXYZ  
abcdefghijklmnopqrstuvwxyz  
1234567890!@#\$%^&\*()*

**Myriad Pro Semibold**

**ABCDEFGHIJKLMNOPQRSTUVWXYZ  
abcdefghijklmnopqrstuvwxyz  
1234567890!@#\$%^&\*()**

**Myriad Pro Semibold Condensed**

**ABCDEFGHIJKLMNOPQRSTUVWXYZ  
abcdefghijklmnopqrstuvwxyz  
1234567890!@#\$%^&\*()**



# NEW WORLD BUSINESS SYSTEM

Budget Method Project Life Basis

Totals Life-to-Date Fiscal Year 2014

Expenses	
Original Budget	\$0.00
Budget Amendments - Posted	\$40,500.00
Budget Amendments - Unposted	\$0.00
Total Budget	\$40,500.00

Revenue	
Original Budget	\$0.00
Budget Amendments - Posted	\$300,000.00
Budget Amendments - Unposted	\$0.00
Total Budget	\$300,000.00

Actual	
Actual	\$11,158.17
Encumbrances	\$0.00
Unposted Transactions	\$0.00
Available Budget	\$29,341.83

Project Budget Analysis - Expenses

Project Budget Analysis - Revenue

Unposted Activity

General

Revenues

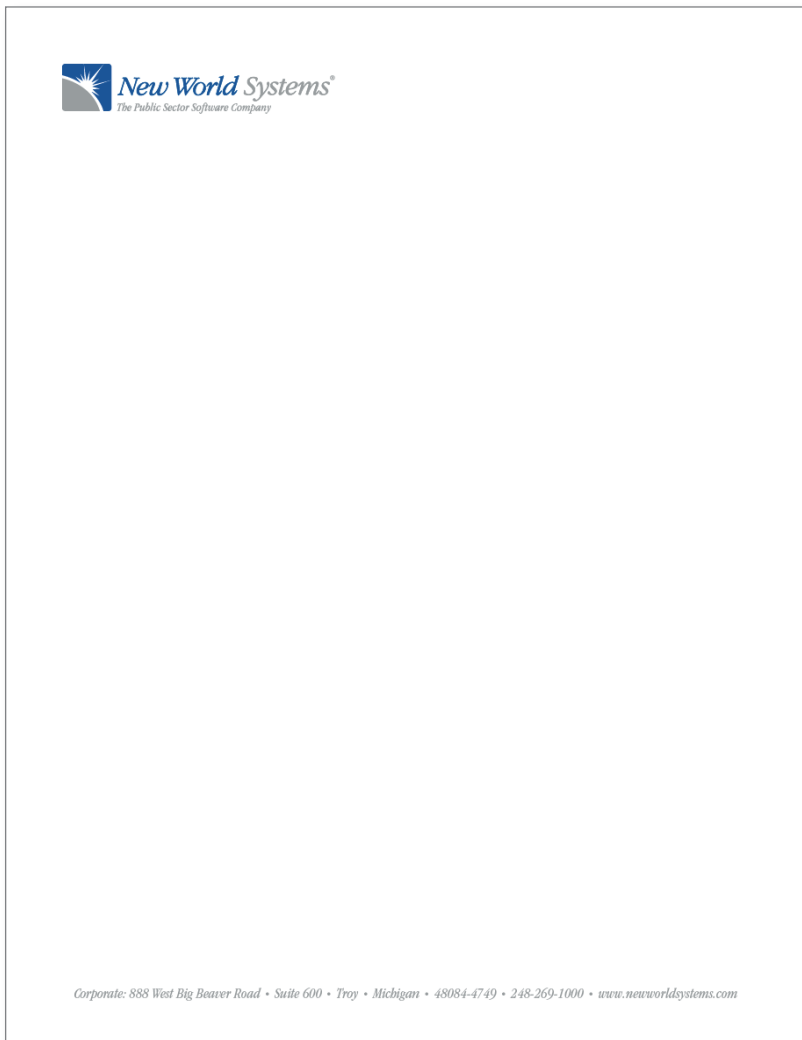
Fiscal End Year	Budget	Revenue	Balance	% Used
2010	\$300,000.00	\$87,800.00	\$212,200.00	29.26



## BUSINESS SYSTEM System Options

Stationery items play an important role in communicating a consistent image. The New World business system uses the Primary logo with tagline. This includes letterhead, #10 envelope, business cards and 10x13" envelopes used for mailers. Consistent email signatures deliver a visually coherent look across departments.

Just as our business cards follow a standardized approach, email signatures should be consistent. Below is an example of an appropriate New World email signature. Myriad Pro is the font that should be used.



Letterhead



#10 Envelope



Business Card

John Doe  
Territory Manager

New World Systems Corp.  
888 West Big Beaver Road, Suite 600  
Troy, MI 48084  
(248) 269-1000 x9999



Email Signature



BUSINESS SYSTEM  
System Options



10x13" Envelope - Aegis



10x13" Envelope - Logos



# NEW WORLD PRINT



# PRINT Brochures

**New World Systems**

LAW ENFORCEMENT  
FIRE & EMS  
DISPATCH  
RECORDS  
MANAGEMENT  
MOBILE  
COMPUTING &  
FIELD-BASED REPORTING  
**AEGIS**  
CORRECTIONS  
MANAGEMENT  
WEB-BASED  
INFORMATION SHARING  
DECISION SUPPORT  
& DASHBOARDS

www.newworldsystems.com

**New World Systems**  
Integrated Software Solutions for Public Safety

Aegis General Brochure

## PROVEN

**THE SAFE CHOICE IN PUBLIC SAFETY SOFTWARE**

Three decades of stability, innovation and public sector focus have made New World Systems one of the few companies to thrive in the Public Safety software market. Privately held, New World is able to focus 100% of our efforts on more than 1,000 public sector agencies nationwide.

**FULL SUITE OF END-TO-END SOLUTIONS**

Built on current generation Microsoft® IT technology, Aegis Public Safety Software solutions are never acquired by New World. Unlike other software providers, our solutions are developed in house from the ground up to offer unmatched application integration with easy maintenance and administration for years to come.

**UNRIVALED R&D INVESTMENTS KEEP SOFTWARE CURRENT**

New World continues to invest tens of millions of dollars in R&D and employ hundreds of software developers who work with agencies to continuously enhance the Aegis suite. This protects your long-term investment and ensures you are ready for advances in data sharing, mobility, intelligence, Next Generation 9-1-1 and future requirements.

Stable    Innovative    Focused    Reliable

**Computer Aided Dispatch**

**Law Enforcement Mobile Computing**

**Law Enforcement Records Management**

**Corrections Management**

**Decision Support & Dashboards**

**Data Sharing**

**Advantages:**

- Multiplatform Support Technology for Law Enforcement, Fire & EMS
- Integrated GIS & PLS Inventory Mapping
- Automated EMD Recommendation Based on Priority & Resources
- Multiple, Configurable, First Responders Command Lists
- High Availability with the Ability to Operate Stand Alone without a Server Connection
- Information Sharing via CAD-to-CAD
- Combined GIS & CAD Technology Environment Provides the Framework for NG9-1-1

**Integrated ACROSS DEPARTMENTS & DISCIPLINES**

**New World Systems**

**SOFTWARE THAT RESPONDS.**

## DISPATCH

**Improve first responder safety & decrease response times**

Dispatchers can quickly send the most appropriate resources by leveraging features and information, including:

- Automatic Address Verification
- Dynamic Unit Reassignments
- 9-1-1 & Phase 2 Dispatch Call Support
- Access to Fire Plans, Hazards, Plans & Warnings, Alerts & Critical Information

**Designed to maximize productivity & minimize effort**

Easy-to-use Aegis CAD provides a familiar Windows environment, command line entry, drag-and-drop dispatch, a fully integrated map and is configurable to agency-specific needs. It provides access to the most information and functions each call taker and dispatcher needs when every second counts.

**More location information enhances situational awareness**

The latest GIS technology embedded in Aegis CAD provides geographical analysis and visual reference to dispatchers and field personnel through high performing, step-to-minute maps. They contain a wealth of information with the ability to track and review all units, ongoing presentations.

**Enhanced collaboration & communication**

Aegis CAD improves communication between dispatch and first responders, enabling alert dispatching and less reliance on radio use. Combined with Aegis CAD Web Client, it also keeps personnel well informed with web-based real time information. Aegis CAD-to-CAD functionality enables on-map, call and multi-jurisdictional response by providing other dispatch centers with the ability to track call information.

**Advantages:**

- Multiplatform Support Technology for Law Enforcement, Fire & EMS
- Integrated GIS & PLS Inventory Mapping
- Automated EMD Recommendation Based on Priority & Resources
- Multiple, Configurable, First Responders Command Lists
- High Availability with the Ability to Operate Stand Alone without a Server Connection
- Information Sharing via CAD-to-CAD
- Combined GIS & CAD Technology Environment Provides the Framework for NG9-1-1

**New World Systems**





# PRINT Brochures



**New World Systems**

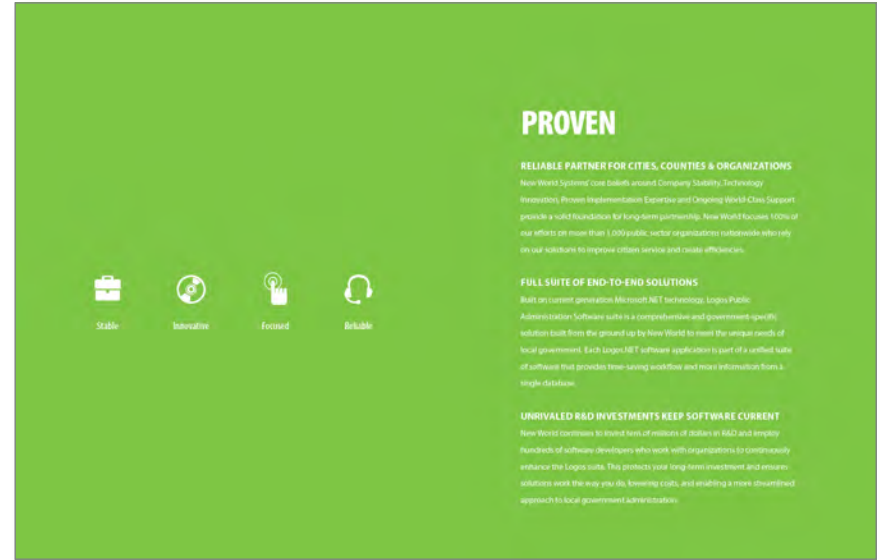
**PUBLIC ADMIN**  
**FINANCIAL MANAGEMENT**  
**COMMUNITY DEVELOPMENT**  
**LOGOS**  
**UTILITY MANAGEMENT**  
**WEB-BASED INFORMATION SHARING**  
**DECISION SUPPORT & DASHBOARDS**

[newworldsystem.com/local-gov](http://newworldsystem.com/local-gov)

**New World Systems**  
**LOGOS™**  
 Integrated Software Solutions for Cities, Counties & Organizations

**New World Systems**

Logos General Brochure



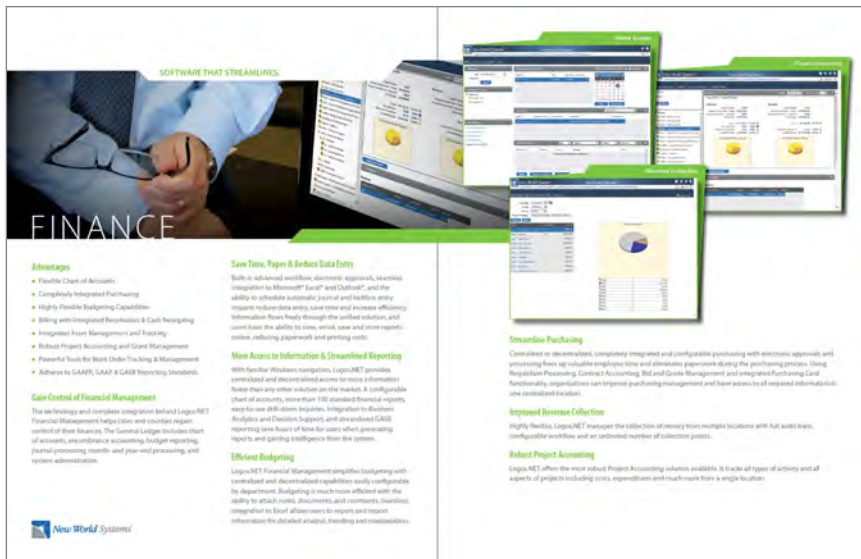
**PROVEN**

**RELIABLE PARTNER FOR CITIES, COUNTIES & ORGANIZATIONS**  
 New World Systems' core beliefs around Company Stability, Technology Innovation, Proven Implementation Expertise and Ongoing World-Class Support provide a solid foundation for long-term partnership. New World Systems, 100% of our efforts are more than 1,000 public sector organizations nationwide who rely on our solutions to improve citizen service and create efficiencies.

**FULL SUITE OF END-TO-END SOLUTIONS**  
 Built on current generation Microsoft .NET technology, Logos Public Administration Software suite is a comprehensive and government-specific solution built from the ground up by New World to meet the unique needs of local government. Each Logos .NET software application is part of a unified suite of software that provides time-saving workflow and more information from a single database.

**UNRIVALED R&D INVESTMENTS KEEP SOFTWARE CURRENT**  
 New World continues to invest tens of millions of dollars in R&D and employs hundreds of software developers who work with organizations to continuously enhance the Logos suite. This protects your long-term investment and ensures solutions work the way you do, lowering costs, and enabling a more streamlined approach to local government administration.

**Stable** **Innovative** **Focused** **Reliable**



**SOFTWARE THAT STREAMLINES**

**FINANCE**

**Advantages**

- Flexible Chart of Accounts
- Completely Integrated Purchasing
- Highly Flexible Budgeting Capabilities
- Billing with Integrated Receivables & Cash Reversing
- Integrated Asset Management and Tracking
- Reduce Project Accounting and Grant Management
- Powerful Tools for Work Order Tracking & Management
- Adheres to GAAP, GAAP & GASB Reporting Standards

**Gain Control of Financial Management**  
 The fee tracking and complete integration behind Logos.NET Financial Management helps you and your team regain control of their finances. The General Ledger includes chart of accounts, comprehensive accounting, budget reporting, journal processing, month-end year-end processing and system administration.

**Save Time, Paper & Reduce Data Entry**  
 Built on advanced workflow, automated approval, seamless integration to Microsoft® Excel® and Outlook®, and the ability to schedule automatic journal and workflow entry reports reduce data entry time and increase efficiency. Information flows freely through the unified solution, and you have the ability to view, edit, save and more reports online, reducing paperwork and printing costs.

**More Access to Information & Streamlined Reporting**  
 With flexible workflow navigation, Logos.NET provides centralized and decentralized access to more information faster than any other solution on the market. A configurable chart of accounts, more than 100 standard financial reports, easy-to-use drill-down inquiries, integration to business Analytics and Decision Support, and advanced GASB reporting save hours of time for users while generating reports and gaining intelligence from the system.

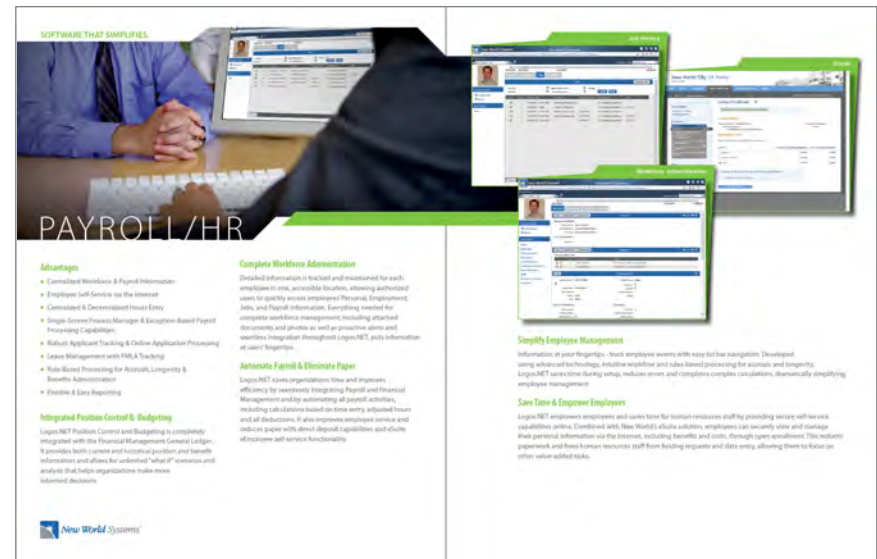
**Efficient Budgeting**  
 Logos.NET Financial Management simplifies budgeting with centralized and decentralized capabilities easily configurable by department. Budgeting is much more efficient with the ability to attach notes, documents and comments. Seamless integration to local affairs users to report and support information for detailed analysis, trending and reconciliation.

**Streamline Purchasing**  
 Centralized or decentralized, completely integrated and configurable purchasing with electronic approvals and processing from up valuable employee time and automate paperwork during the purchasing process. Using Requisition Processing, Contract Accounting, Bid and Quote Management and integrated from using Card functionality, organizations can improve purchasing management and have access to all required information, one centralized location.

**Improved Revenue Collection**  
 Highly flexible, Logos.NET manages the collection of money from multiple locations with full access to configurable workflow and an unlimited number of collection points.

**Robust Project Accounting**  
 Logos.NET offers the most robust Project Accounting solution available. It tracks all types of activity and all aspects of projects including costs, expenditures and much more from a single location.

**New World Systems**



**SOFTWARE THAT SIMPLIFIES**

**PAYROLL / HR**

**Advantages**

- Centralized Workforce & Payroll Information
- Employee Self Service via the Internet
- Centralized & Decentralized Hours Entry
- Single-Screen Process Manager & Exception-Based Payroll Processing Capabilities
- Robust Applicant Tracking & Online Application Processing
- Leave Management with FMLA Tracking
- Rule-Based Processing for Absence, Longevity & Benefits Administration
- Flexible & Easy Reporting

**Complete Workforce Administration**  
 Detailed information is tracked and maintained for each employee in one, accessible location, allowing authorized users to quickly access employee Personal, Employment, Job, and Payroll information. Everything needed for complete workforce management, including attached documents and photos as well as proactive alerts and workflow integration throughout Logos.NET, puts information at user's fingertips.

**Automate Payroll & Eliminate Paper**  
 Logos.NET saves organizations time and increases efficiency by seamlessly integrating Payroll and Financial Management and by automating all payroll activities, including call-in/calls-out based on time entry, self-rated hours and all deductions. It also manages employee service and reduces paper with direct deposit capabilities and efile with various self service functionalities.

**Integrate Position Control & Budgeting**  
 Logos.NET Position Control and Budgeting is completely integrated with the Financial Management General Ledger. It provides both current and historical position and benefit information and allows for unlimited "what-if" scenarios and analysis that helps organizations make more informed decisions.

**Simplify Employee Management**  
 Information at your fingertips - track employee events with easy-to-use navigation. Developed using advanced technology, intuitive workflow and rules-based processing for accuracy and integrity, Logos.NET saves time during setup, reduces error and complete complete capabilities, dramatically simplifying employee management.

**Save Time & Empower Employees**  
 Logos.NET empowers employees and saves time for human resources staff by providing self-service capabilities online. Combined with New World's flexible workflow, employees can securely view and manage their personal information via the internet, including benefits and costs, through open enrollment. The intuitive paperwork and flow to ensure resources staff from building inquiries and data entry, allowing them to focus on other value-added tasks.

**New World Systems**



# PRINT Brochures

**New World Systems**

LAW ENFORCEMENT  
FIRE & EMS  
DISPATCH  
RECORDS  
MANAGEMENT  
MOBILE  
COMPUTING &  
FIELD-BASED REPORTING

**AEGIS**

CORRECTIONS  
MANAGEMENT  
WEB-BASED  
INFORMATION SHARING  
DECISION SUPPORT  
& DASHBOARDS

www.newworldsystems.com

**New World Systems**

Integrated Software Solutions for Fire & EMS

## PROVEN

**THE SAFE CHOICE IN PUBLIC SAFETY SOFTWARE**

Three decades of stability, innovation and public sector focus have made New World Systems one of the most reliable companies in the Public Safety software market. Privately held, New World is able to focus 100% of our efforts on more than 1,000 public sector agencies nationwide.

**FULL SUITE OF END-TO-END SOLUTIONS FOR FIRE & EMS**

Built on current-generation Microsoft technology, New World's Aegis Public Safety solution was developed from the ground-up as a complete, integrated suite of software, providing accurate and secure intelligence across all disciplines for Dispatchers, Firefighters, EMS and Command Staff. From proactive administration tasks such as inspections, training and accreditation to everyday operations including call response and reporting, Aegis Fire increases efficiency and saves valuable time when every second counts.

**UNRIVALED R&D INVESTMENTS KEEP SOFTWARE CURRENT**

New World continues to invest tens of millions of dollars in R&D and work with agencies across the country to continuously enhance the Aegis Fire suite. This protects your long-term investment and ensures you are ready to meet future requirements.

Stable   Innovative   Focused   Reliable

Fire General Brochure

**Computer Aided Dispatch**   **Fire Mobile Computing**   **Fire Records Management - Incident Wizard**   **Investigation**   **Fire Decision Support**

**Advantages:**

- Multi-Functional Dispatching Functionality
- Embedded GIS and Proximity Response Tools/Algorithms
- Agency-Defined Response Plans
- Real-Time GPS Unit Location for Service/Redirection
- Crisis Mapping
- No-Itch Reports to Stations
- Agency-Defined Payroll & Scheduling
- Information-Sharing via CAD-to-CAD
- Built-in Reports Support Agency-Defined Requirements

**Integrated Across Departments & Disciplines**

Law Enforcement Mobile Computing   Law Enforcement Decision Support   Law Enforcement Records Management

**SOFTWARE THAT RESPONDS.**

## DISPATCH

**Advantages:**

- Multi-Functional Dispatching Functionality
- Embedded GIS and Proximity Response Tools/Algorithms
- Agency-Defined Response Plans
- Real-Time GPS Unit Location for Service/Redirection
- Crisis Mapping
- No-Itch Reports to Stations
- Agency-Defined Payroll & Scheduling
- Information-Sharing via CAD-to-CAD
- Built-in Reports Support Agency-Defined Requirements

**Designed to Maximize Productivity & Minimize Effort**

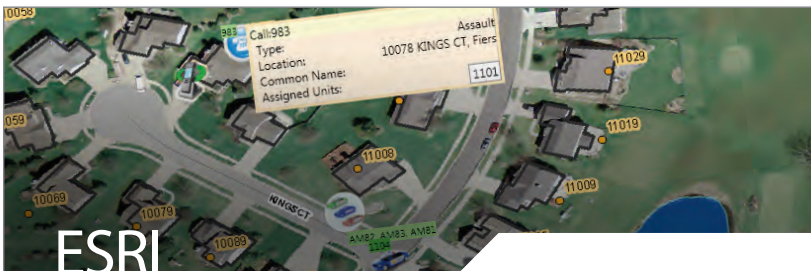
Easy-to-use Aegis CAD provides a familiar Windows environment, command-line entry, drag-and-drop dispatch, a fully integrated map and is configurable to agency-specific needs. It provides access to the exact information and functions each call-taker and dispatcher needs when every second counts.

**More Location Information Enhances Situational Awareness**

The latest GIS technology embedded in Aegis CAD provides geographical analysis and visual reference to dispatchers and firefighters through high-performance, view-optimized maps. Aegis CAD maps contain a wealth of information, including feature boundaries and addresses, business materials, geographic coordinates, flow plans, topography, IP address mapping and more, with the ability to track and monitor all units to improve performance.



# PRINT Partnership Flyers



## ESRI

### Partnership Advantages

The combined GIS solution from New World Systems® and Esri® provides police, fire, and EMS agencies seamless access to geographic information that helps them save lives and better serve their communities.

The latest Esri mapping technology, embedded in Aegis™ Public Safety Software Solutions, provides geographical analysis and visual reference to dispatchers and field personnel through high-performing easy-to-maintain maps.

#### Industry-Leading GIS Integration

- New World is Esri's Largest Public Safety Partner
- Only Public Safety Solution Provider Participating in Esri's Business Partner Advantage Program
- Engaged in Esri's Exclusive Private Beta Testing Program

#### Situational Dynamic Response™ (SDR): Proximity Dispatch

- Dynamic ETA's with True Situational Awareness Based Upon Travel Time, Road Systems & Real-World Routing Factors
- Access External Data Services like Traffic Cameras, Sensors, Alarms, Video, Demographic Data & More
- Decrease Response Times by Leveraging GIS Data from Neighboring Agencies

#### Never Waste a Moment with Unique Addressing

- NG-9-1-1 Addressing Standards Compliant
- Dispatch with Confidence to Fractional House Addresses, Multi-Residential/Commercial Locations & Rural Addresses

*"New World is significantly advancing the use of GIS technology to help public safety agencies and municipalities improve service to the general public."*

Lew Nelson  
Director - Industry Solutions &  
Global Law Enforcement | Esri

#### SIMPLIFY GIS ADMINISTRATION

- No Downtime During Updates
- Consistent GIS throughout Aegis Public Safety Software Solutions
- Synchronize Maps Easily without a Trained GIS Professional
- Simplify Map Updates with Industry Standard REST Data
- No Data Conversion



## LASERFICHE

### Partnership Advantages

New World Systems' local government ERP solutions and Laserfiche's Enterprise Content Management (ECM) software systems provide instant access to documents and complete information for public sector organizations.

The partnership makes it easier and more cost-effective for public sector organizations to acquire and leverage both premier solutions to streamline everyday operations.

#### Enterprise Content Management throughout Logos.NET™

- Improve Organizational Efficiency with a Central Document Repository
- Access Documents via Laserfiche in 43 Places throughout the Logos.NET Public Administration Suite
- Modernize & Streamline Business Processes

#### Paperless Purchasing & A/P

- Ensure Documents are Routed Properly & Approved Purchasing Procedures are Followed
- Electronically Route, Approve & Process Invoices
- Reduce Errors while Saving Time & Money

#### Human Resources & Payroll

- Save Time & Money by Reducing Redundant Data Entry
- Attach Applications, Resumes, W-4 Forms, Direct Deposit Slips & Disciplinary Documents at the Employee Level
- Empower Employees to Update their Personal Information, Review Pay Stubs & Make Benefit Selections via Logos.NET eSuite Self-Service Portal

#### Community Development

- Streamline Projects by Accessing Documents Directly from Logos.NET Community Development
- Automate Permitting & Licensing via Logos.NET eSuite Self-Service Portal

*"By integrating New World's ERP solutions with Laserfiche ECM, state & local governments benefit from having easy access to electronic documents through the New World interface."*

Catherine Ramos  
Director of Professional Developer Partnerships  
Laserfiche

#### INTEGRATED ERP & ECM BENEFITS

- Logos.NET ERP Serves Over 24,000,000 Citizens Every Day
- Leverage Existing Laserfiche Investment
- Eliminate Organizational Silos by Enabling Secure Access to Content
- Integrated Workflow Between Logos.NET & Laserfiche
- Dynamic Attachment Icon Indicates Number of Documents Available
- Automatically Capture Documents into Logos.NET from Your Scanner



Aegis

Logos



## MIAMI BEACH

### Property Room Goes Paperless

For public safety agencies, an efficient and secure property room is crucial to effective law enforcement. This requires a proper storage environment, chain-of-custody and, most of all, accountability. Fortunately, software and technology have evolved to free up space, time and paperwork for agency property rooms.

Prior to 2013, Miami Beach Police Department's property and evidence system was built on old technology that was no longer supported. In addition, it didn't interface with their Records Management software which forced the agency to rely on paperwork. Without a reliable system, there was room for human error, lost documents and missing data that could have huge consequences for Miami Beach PD and their criminal cases.

#### Partnering with New World for a Solution

Miami Beach PD turned to New World for a solution to their property room challenges and worked closely with New World's software development team to design a solution that would meet their needs. New World took the Agency's vision and created a functional software module that has dramatically improved property room operations.

Available with New World's Law Enforcement Records Management software, the Aegis Property module helps agencies manage the everyday operations of property and evidence rooms, including intake, chain of custody, disposal and reporting. New World also offers integrated property room bar coding to further simplify tracking and management of property.

Based on feedback from Miami Beach PD, advances in software features, workflow and integration have made the Aegis Property solution more robust and has allowed the agency to save time, get organized, and eliminate paperwork.

*"Our paper dependencies were ridiculous. We knew we had to make a drastic change, so we contacted New World."*

#### MIAMI BEACH POLICE DEPT, FLORIDA

Area Served: 7.1 mi<sup>2</sup>  
Population Served: 90,000  
Sworn Officers: 392  
Calls for Service/Year: 250,000  
Incidents/Year: 170,000  
New World Customer Since: 2008

The Miami Beach Police Department protects and serves residents and visitors in one of the most popular coastal resort cities in the U.S. The PD has been a New World Systems' Aegis™ Public Safety Software customer since 2008. On average, the Miami Beach PD handles 1,000 pieces of property a week in a large-scale, twenty-four by seven operation with multiple facilities and storage locations.

 **New World Systems**  
newworldsystems.com/Public-Safety  



## WAUKESHA

### A Greater Return on Investment

As the third largest county in the state of Wisconsin, Waukesha County serves more than 390,000 residents throughout 37 municipalities. Over the last decade, the County has experienced significant growth, while maintaining high levels of service to the public. In the mid-90's, the County selected a large Tier One ERP solution to meet its growing needs. At the time, the huge system with complex configuration appeared to be a good fit for the County and the only way to support the magnitude of its business operations. Soon after implementation, the Tier One ERP vendor discontinued support for the software, forcing Waukesha County to re-license a new version. After seven years of high maintenance costs and time-consuming administration, the County determined that the ERP system would once again become unsupported.

#### Waukesha County Had Three Options:

1. Stay on its current system and be unsupported moving forward.
2. Re-contract with its current vendor and wait decades to see any return on investment.
3. Implement a Local Government-Specific ERP solution and see a return on investment in eight years.

#### New World's Solution

Waukesha County worked with a consultant to develop a request for proposal (RFP) and soon found that some Local Government-Specific ERP Vendors offered solutions that could meet the demanding needs of a large county far better than the Tier One ERP providers. After a thorough evaluation, the County selected New World Systems Logos.NET™ Public Administration Solution.

New World's Logos.NET Financial Management software offered the configurability that Waukesha County needed and would easily interface with other programs that the County wanted to continue using, including its payroll system. It also offered seamless integration with Microsoft® applications that County employees use every day, such as Excel®. With configurable workflow, the County could also centralize and decentralize

*"With New World's software, the upgrade process has been reduced to less than a day."*

John Hebert, System Analyst

#### WAUKESHA COUNTY, WISCONSIN

Area Served: 580 mi<sup>2</sup>  
Population Served: 389,891  
New World Customer Since: 2011

Waukesha County is home to more than 390,000 residents living in 37 municipalities. As the third largest county in the state of Wisconsin, Waukesha continues to experience significant growth. To accommodate this growth, in 2011 the county selected New World Systems' Logos.NET™ Public Administration Solution. The county has since experienced significant savings and increased its efficiency.

 **New World Systems**  
newworldsystems.com/Local-Gov  

Aegis

Logos



PRINT  
Trifold Brochures

COMPANY THAT'S STABLE.



**POSITIONED FOR LONG-TERM GROWTH**

- Partnerships with Our Customers
- Investments in Software
- Investments in Service and Support
- Investments in People

newworldsystems.com

30+ Years: Growth & Profitability  
Over 400 Employees & Growing  
20% Revenues Invested into R&D  
100% Owned by Employees  
Exclusively Public-Sector Applications  
Growing Customer Base and Market Share  
All Software Developed by New World Employees  
Never Discontinued a Product  
Centralized Support Center: 24x7  
Customer-Centric Business Model  
No Mergers or Acquisitions  
Windows Based Solutions  
Performance Bonds

**New World Systems**

LAW ENFORCEMENT  
FIRE & EMS  
COMPUTER-AIDED  
DISPATCH  
RECORDS  
MANAGEMENT  
MOBILE  
COMPUTING &  
FIELD-BASED REPORTING  
**AEGIS**  
CORRECTIONS  
MANAGEMENT  
WEB-BASED  
INFORMATION SHARING  
DECISION SUPPORT  
& DASHBOARDS

newworldsystems.com/public-safety

City of Fayetteville Police & Fire  
Welcoming the Opportunity to be  
Your Public Safety Partner

**New World Systems**

© 2014 New World Systems Corporation. All rights reserved. New World Systems Logo is a registered trademark of New World Systems Corporation. All other company and product names may be trademarks of their respective owners. The information provided in this document, including cover image, is subject to change.

Aegis

COMPANY THAT'S STABLE.



**POSITIONED FOR LONG-TERM GROWTH**

- Partnerships with Our Customers
- Investments in Software
- Investments in Service and Support
- Investments in People

newworldsystems.com

30+ Years: Growth & Profitability  
Over 400 Employees & Growing  
20% Revenues Invested into R&D  
100% Owned by Employees  
Exclusively Public-Sector Applications  
Focused on Commercial-off-the-Shelf Software  
Exclusively Public-Sector Applications  
All Software Developed by New World Employees  
Never Discontinued a Product  
Centralized Support Center: 24 x 7  
Customer-Centric Business Model  
No Mergers or Acquisitions

**New World Systems**

LAW ENFORCEMENT  
FIRE & EMS  
COMPUTER-AIDED  
DISPATCH  
RECORDS  
MANAGEMENT  
MOBILE  
COMPUTING &  
FIELD-BASED REPORTING  
**AEGIS**  
CORRECTIONS  
MANAGEMENT  
WEB-BASED  
INFORMATION SHARING  
DECISION SUPPORT  
& DASHBOARDS

newworldsystems.com

Visalia Fire Department  
Welcoming the Opportunity to be  
Your Public Safety Partner

**New World Systems**

© 2014 New World Systems Corporation. All rights reserved. New World Systems Logo is a registered trademark of New World Systems Corporation. All other company and product names may be trademarks of their respective owners. The information provided in this document, including cover image, is subject to change.

Aegis Fire

COMPANY THAT'S STABLE.



**POSITIONED FOR LONG-TERM GROWTH**

- Partnerships with Our Customers
- Investments in Software
- Investments in Service and Support
- Investments in People

newworldsystems.com

30+ Years: Growth & Profitability  
Over 400 Employees & Growing  
20% Revenues Invested into R&D  
100% Owned by Employees  
Standard Software Business Model  
Focus on Integrated Applications  
All Software Developed by New World Employees  
Never Discontinued a Product  
Centralized Support Center: 24 x 7  
Performance Bonds

**New World Systems**

PUBLIC ADMIN  
HUMAN RESOURCES  
PAYROLL  
FINANCIAL  
MANAGEMENT  
COMMUNITY  
DEVELOPMENT  
**LOGOS**  
UTILITY  
MANAGEMENT  
WEB-BASED  
INFORMATION SHARING  
DECISION SUPPORT  
& DASHBOARDS

newworldsystems.com

Sacramento County  
California  
Welcoming the Opportunity to be  
Your Public Safety Partner

**New World Systems**

© 2014 New World Systems Corporation. All rights reserved. New World Systems Logo is a registered trademark of New World Systems Corporation. All other company and product names may be trademarks of their respective owners. The information provided in this document, including cover image, is subject to change.

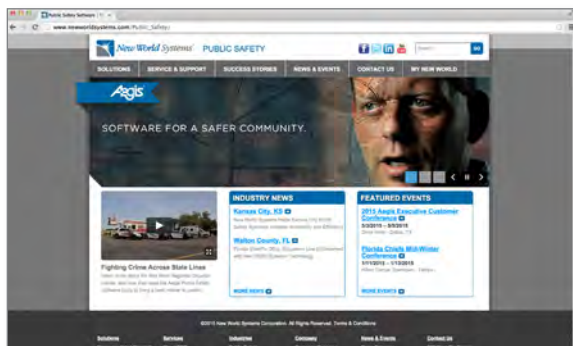
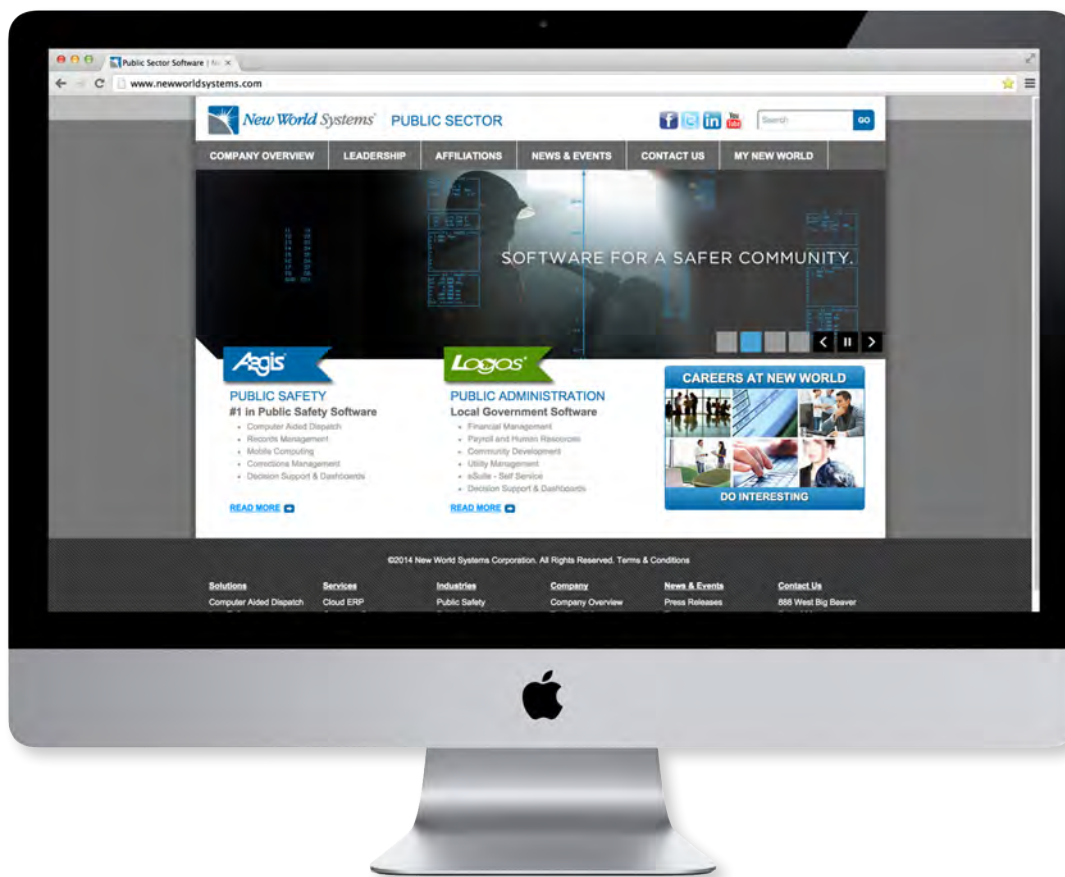
Logos



# NEW WORLD WEB



# WEB Corporate Website



Agis



Logos



Careers



New World Systems®

## <Name of Seminar>

Join other local agencies as New World Systems hosts an exclusive look into how agencies across the country are implementing public safety software to streamline processes, increase efficiency, and position themselves for the future.

**Register for this FREE Seminar**

Learn about trends in public safety software, including solution integration, interoperability, business intelligence and dashboards.

**<Month> <Day>, <Year>**  
**<:xx> A.M. - <:xx> P.M.**

**<Location>**  
**<Street>**  
**<City>, <State> <Zip Code>**

[Register Today](#)

### Agenda

Time	Session	Presenter
<:xxam - :xxam>	<Session Name>	<Presenter Name> – <Company>
<:xxam - :xxam>	<Session Name>	<Presenter Name> – <Company>
<:xxam - :xxam>	<Session Name>	<Presenter Name> – <Company>
<:xxam - :xxam>	<Session Name>	<Presenter Name> – <Company>
<:xxam - :xxam>	<Session Name>	<Presenter Name> – <Company>
<:xxam - :xxam>	<Session Name>	<Presenter Name> – <Company>

**Over three decades of stability, innovation & public sector focus**

New World Systems is one of the most trusted public sector software companies in the market. More than 1,000 public sector organizations nationwide rely on our solutions to enhance service and create efficiencies.

**Like, Follow & Connect with Us**

Aegis

New World Systems®

## <Name of Seminar>

### <Seminar Topic ex. Successful ERP Implementation>

Join other local government organizations in your area as New World Systems hosts an exclusive look into how municipalities across the country implement public administration software to streamline processes, increase efficiency, and position themselves for future cost savings.

**Register for this FREE seminar**

- Learn Why Technology Matters
- Empower Your Departments without Compromising Internal Controls
- See Automated & Process Improvements Possibilities
- Discuss What are Successful Keys to Implementation

**<Month> <Day>, <Year>**  
**<:xx> A.M. - <:xx> P.M.**

**<Location>**  
**<Street>**  
**<City>, <State> <Zip Code>**

[Register Today](#)

### Agenda

Time	Session	Presenter
<:xxam - :xxam>	<Session Name>	<Presenter Name> – <Company>
<:xxam - :xxam>	<Session Name>	<Presenter Name> – <Company>
<:xxam - :xxam>	<Session Name>	<Presenter Name> – <Company>
<:xxam - :xxam>	<Session Name>	<Presenter Name> – <Company>
<:xxam - :xxam>	<Session Name>	<Presenter Name> – <Company>
<:xxam - :xxam>	<Session Name>	<Presenter Name> – <Company>

**Over three decades of stability, innovation & public sector focus**

New World Systems is one of the most trusted public sector software companies in the market. More than 1,000 public sector organizations nationwide rely on our solutions to enhance service and create efficiencies.

**Like, Follow & Connect with Us**

Logos





# WEB Landing Pages

**New World Systems**

## ENABLING INTELLIGENCE for Public Safety Agencies

New World Systems' Aegis™ Public Safety Software Solutions offer unmatched application integration that improve safety, provide time-saving workflow and better access to critical information.

**Advantages**

- Reliable Partner for Cities, Counties & Organizations
- Full Suite of End-to-End Solutions
- Unrivaled R&D Investments Keep Software Current

---

**AEGIS Public Safety Software**

Provides law enforcement, fire, and corrections agencies with actionable intelligence to make fast and fully informed decisions.

[Request a Aegis™ Public Safety Solutions Brochure](#)

---

<b>Press Release</b> <b>Intrado</b> A Public Safety Alliance to Advance Next Generation 9-1-1 Technology. <a href="#">Read More</a>	<b>Case Study</b> <b>Miami Beach, FL</b> Agency turns to New World for a solution to their property room challenges. <a href="#">Read More</a>	<b>Testimonials</b> <b>Peer Perspective</b> Listen to what others have to say about partnering with New World Systems. <a href="#">View Videos</a>
--	---	---

---

**Over three decades of stability, innovation & public sector focus** **Like, Follow & Connect with Us**

New World Systems is one of the most trusted public sector software companies in the market. More than 1,000 public sector organizations nationwide, rely on our solutions to enhance service and create efficiencies.

Aegis

**New World Systems**

## A MORE EFFICIENT GOVERNMENT for Cities, Counties & Organizations

New World Systems' LOGOS.NET™ ERP Software Solutions work the way you do, lowering costs, enabling intelligence and providing a streamlined approach to local government.

**Advantages**

- Reliable Partner for Cities, Counties & Organizations
- Full Suite of End-to-End Solutions
- Unrivaled R&D Investments Keep Software Current

---

**ERP SOFTWARE for Local Government**

New World Systems offers a comprehensive, cost-effective, and government-specific alternative to ERP that lowers costs, reduces risk, and creates greater efficiencies for local government

[Request a Logos.NET™ Public Admin. Solutions Brochure](#)

---

<b>Press Release</b> <b>Laserfiche</b> Industry-Leading ERP & Content Mgmt. Solutions Integrate Further for Local Government. <a href="#">Read More</a>	<b>Case Study</b> <b>Macon-Bibb County, GA</b> The Right Solution for Local Government Consolidation. <a href="#">Read More</a>	<b>Testimonials</b> <b>Peer Perspective</b> Listen to what others have to say about partnering with New World Systems. <a href="#">View Videos</a>
--	--	---

---

**Over three decades of stability, innovation & public sector focus** **Like, Follow & Connect with Us**

New World Systems is one of the most trusted public sector software companies in the market. More than 1,000 public sector organizations nationwide rely on our solutions to enhance service and create efficiencies.

Logos

**New World Systems**

## RESPOND FASTER. SMARTER. SAFER.

New World Systems Aegis™ Fire & EMS Public Safety Software Solutions offer quick access to the most accurate intelligence to keep firefighters safe and well prepared.

**Advantages**

- Increase Firefighter Safety & Decrease Response Times
- Critical Information at Your Fingertips
- Reduce Data Entry, Save Time & Streamline Reporting

---

**INTEGRATED Software Solutions**

- Computer Aided Dispatch
- Fire Records
- Fire Mobile
- Fire Decision Support & Dashboards

[Request YOUR Fire Brochure](#)

---

<b>ENHANCE</b> <b>Communication</b> Aegis Fire Mobile enhances communication and access to information in the field. <a href="#">Read More</a>	<b>MANAGE</b> <b>Information</b> Aegis Fire Records provides everything needed to collect, manage and access information to improve fire prevention, response and investigations. <a href="#">Read More</a>	<b>IMPROVE</b> <b>Decision Making</b> Aegis Fire Decision Support provides accurate intelligence to evaluate performance, improve response planning & resource allocation. <a href="#">Read More</a>
---	--	---

---

**Over three decades of stability, innovation & public sector focus** **Like, Follow & Connect with Us**

have made New World Systems one of the most trusted public sector software companies in the market. More than 1,000 public sector organizations nationwide, rely on our solutions to enhance service and create efficiencies.

Aegis Fire



 *New World Systems*

## ENABLING INTELLIGENCE for Michigan Public Safety Agencies

*New World Systems Aegis™ Public Safety Software* offers unmatched application integration that improves community safety, and provides better access to critical information with time-saving workflow.



**Advantages**

- The Safe Choice in Public Safety Software
- Full Suite of End-to-End Solutions
- Unrivaled R&D Investments Keep Software Current

---

 **AEGIS Public Safety Software**  
Provides law enforcement, fire, and corrections agencies with actionable intelligence to make fast and fully informed decisions.

[Request an Aegis Brochure](#)

---

<p><b>Press Release</b> <b>Enhanced GIS</b></p> <p>New World Systems &amp; Esri Announce Latest Mapping Breakthrough For Public Safety.</p> <p><a href="#">Read More</a></p>	<p><b>Case Study</b> <b>Kankakee County Sheriff, IL</b></p> <p>Case Solved With Fast Access to Information.</p> <p><a href="#">Read More</a></p>	<p><b>Testimonials</b> <b>Peer Perspective</b></p> <p>Listen to what others have to say about partnering with New World Systems.</p> <p><a href="#">View Videos</a></p>
--	--	---

---

**Over three decades of stability, innovation & public sector focus**

New World Systems is one of the most trusted public sector software companies in the market. More than 1,000 public sector organizations nationwide rely on our solutions to enhance service and create efficiencies.

**Like, Follow & Connect with Us**



State Landing Page - Aegis

 *New World Systems*

## A MORE EFFICIENT GOVERNMENT for Illinois Cities, Counties & Organizations

*New World Systems Logos .NET™ ERP Software* works the way you do: lowering costs, enabling intelligence, and providing a streamlined approach to local government.



**Advantages**

- Reliable Partner for Cities, Counties & Organizations
- Full Suite of End-to-End Solutions
- Unrivaled R&D Investments Keep Software Current

---

 **ERP SOFTWARE for Local Government**  
New World Systems offers a comprehensive, cost-effective, and government-specific alternative to ERP that lowers costs, reduces risk, and creates greater efficiencies for local government.

[Request a Logos .NET Brochure](#)

---

<p><b>Press Release</b> <b>Hanover Park</b></p> <p>Village selects New World Systems to stay on top of new technology.</p> <p><a href="#">Read More</a></p>	<p><b>Case Study</b> <b>Mount Prospect</b></p> <p>A More Efficient Local Government.</p> <p><a href="#">Read More</a></p>	<p><b>Testimonials</b> <b>Peer Perspective</b></p> <p>Listen to what others have to say about partnering with New World Systems.</p> <p><a href="#">View Videos</a></p>
---	---	---

---

**Over three decades of stability, innovation & public sector focus**

New World Systems is one of the most trusted public sector software companies in the market. More than 1,000 public sector organizations nationwide rely on our solutions to enhance service and create efficiencies.

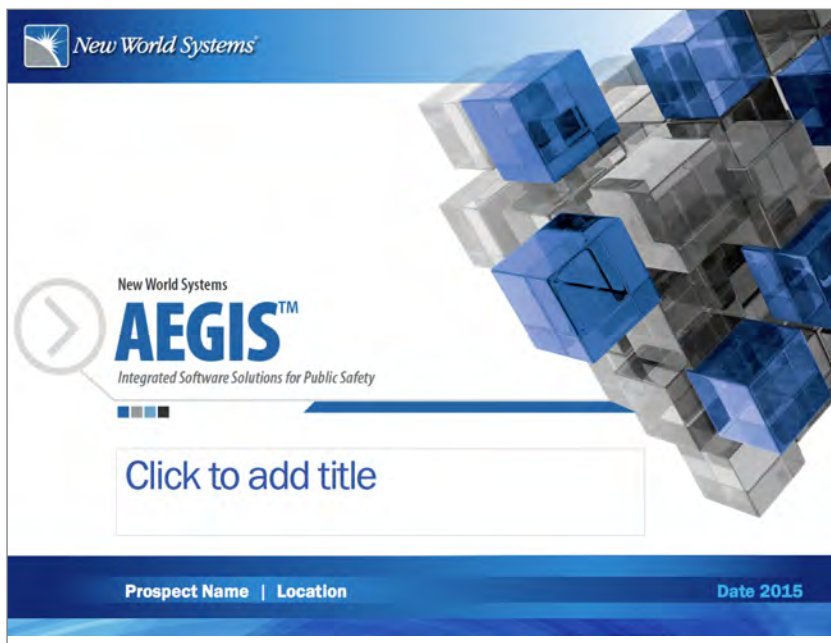
**Like, Follow & Connect with Us**



State Landing Page - Logos



WEB  
PowerPoint Templates



Aegis



Aegis Fire



Logos



## WEB Social Media

New World Systems maintains a robust presence on the popular social networking sites of Facebook, LinkedIn, and Twitter. Our sites are followed by customers and employees alike, all of which receive updates regarding our

latest press releases, events, achievements, and more. We hope to continue growing our presence to better communicate with customers and prospects.





WEB  
Social Media

**@NewWorldSys**

This is our official Twitter handle and can be used by the Twitter community to communicate with us directly.

**#MaximizeYourSolution**

This is used to promote both Aegis and Logos solutions. Used heavily during conferences and other events to streamline conversations.

**#DoInteresting**

This is used for any career-related post pertaining to New World.

**#DeliverThePromise**

This is used to highlight any opportunity where New World has helped a customer reach a significant goal or achievement.

**#PublicSafety**

This is a popular hashtag pertaining to public safety and is used to highlight our Aegis services.

**#LocalGov**

This is a popular hashtag pertaining to the public sector and is used to highlight our Logos services.

**#MovieMonday**

This hashtag promotes our various videos shared on social media pages. Videos are posted every Monday using this hashtag.

**#TechTuesday**

On Tuesdays a fact or story is released pertaining to public safety or local government technology.

**#WhitePaperWednesday**

This hashtag is used for the promotion of white papers, specifically on Twitter and Facebook.

**#TBT**

This Throwback Thursday hashtag is used widely across social media platforms to showcase old photos.

**#FightCrimeFriday**

This is used to go along with a story, photo or video pertaining to public safety and/or fighting crime.

**#FunFactFriday**

Each Friday a new fact is released pertaining to public safety or local government.



# NEW WORLD ADVERTISING

Aegis CAD Enterprise .NET - Dispatch

Dispatch Search Maintenance Help

Call Created: 09/04/2013 08:50:58 LocationType: Carmel

Qualifier: Address

CFS #437 - Default Entry

Call Location: Verified Point location

520 E MAIN ST

CARMEL HIGH SCHOOL 4TH AVE NE / LEXINGTON BLVD 2 car, obvious injury

Cross Streets: Contact Re

Accident - Injury - ALS (248)269-1000

Recommend

Accident - Injury - ALS

Questionnaire 4.NCIC Service Vehicle Rotation 5.E911 6.Incidents

0.Associated Calls 3.People

1.Narrative				
Date	Type	Restriction	Entered By	Narrative
09/04/2013 08:54:22	User Entry	General	jerry	1 person complaining of arm injury
09/04/2013 08:53:59	User Entry	General	jerry	one subject bleeding from head injury
09/04/2013 08:53:31	User Entry	General	jerry	2 vehicle crash, obvious injuries

Command Line

Dispatch [UnitNumbers] [CallNumber] [SecondaryLocation]; [Disposition]; [Comment];

d e10 437

Default Call List (5 items) Pending Calls (5 items) - Cal... Busy Units (14 items) - Defa... Police Calls Only (3 items) -... Fire Calls Only (2 items)



## ENABLING INTELLIGENCE



**AEGIS®**  
Public Safety Software  
provides law enforcement, fire, and corrections agencies with actionable intelligence to make fast and fully informed decisions.

Over 20 years of stability, innovation and public sector focus have made New World Systems one of the most trusted public safety software companies in the market. More than 1000 public sector organizations nationwide rely on our solutions to enhance service, improve safety and create efficiencies.  
Find out more at [newworldsystems.com/Public-Safety](http://newworldsystems.com/Public-Safety)



Aegis

## WHEN THERE'S NO TIME TO WASTE.



Visit Us at Booth 251  
**Win a SmartWatch**

For an Opportunity to WIN Register at  
[www.newworldsystems.com/APCO](http://www.newworldsystems.com/APCO)

**AEGIS® Multi-Jurisdictional CAD Software**  
provides law enforcement, fire, and EMS agencies with actionable intelligence to make fast and fully informed decisions.  
Find out more at [newworldsystems.com/Public-Safety](http://newworldsystems.com/Public-Safety)



Aegis - APCO

## RESPOND FASTER. SMARTER. SAFER.



**Aegis® Fire software keeps fire personnel well informed anywhere, at all times with up-to-the-second incident reports, accurate hydrant locations, and instant availability of equipment and personnel. Retrieving and entering data is easier and it provides a dramatically heightened level of safety. Find out more at [newworldsystems.com/Fire](http://newworldsystems.com/Fire)**



Aegis Fire

## A MORE EFFICIENT GOVERNMENT



**LOGOS®** ERP Software Solutions  
work the way you do, lowering costs, enabling intelligence and providing a streamlined approach to local government.

**AEGIS®** Public Safety Software Solutions offer seamless application integration that improves safety, provides time-saving workflow and more access to critical information.

Over three decades of stability, innovation and public sector focus have made New World Systems one of the most trusted public sector software companies in the market. More than 1000 public sector organizations nationwide rely on our solutions to enhance service and create efficiencies.  
Find out more at [newworldsystems.com/Local-Gov](http://newworldsystems.com/Local-Gov)



Logos



ADVERTISING  
Web

**RESPOND FASTER. SMARTER. SAFER.**  
Click Here to GET STARTED

**RESPOND FASTER. SMARTER. SAFER.**

**SOLUTIONS** for Public Safety

*New World Systems*  
**SOLUTIONS** for Public Safety

Click Here to GET STARTED

*New World Systems*  
**SOLUTIONS** for Public Safety

RESPOND FASTER. SMARTER. SAFER

Click Here to GET STARTED

Aegis

**A MORE EFFICIENT GOVERNMENT**  
Click Here to GET STARTED

**A MORE EFFICIENT GOVERNMENT**

**SOLUTIONS** for Local Gov

*New World Systems*  
**SOLUTIONS** for Local Gov

Click Here to GET STARTED

*New World Systems*  
**SOLUTIONS** for Local Gov

A MORE EFFICIENT GOVERNMENT

Click Here to GET STARTED

Logos

**RESPOND FASTER. SMARTER. SAFER.**  
Click Here to GET STARTED

**RESPOND FASTER. SMARTER. SAFER.**

**SOLUTIONS** for Public Safety

*New World Systems*  
**SOLUTIONS** for Public Safety

Click Here to GET STARTED

*New World Systems*  
**SOLUTIONS** for Public Safety

RESPOND FASTER. SMARTER. SAFER

Click Here to GET STARTED

Fire





# NEW WORLD BRAND EXTENSIONS



Aegis CAD Enterprise .NET - Dispatch

Dispatch Search Maintenance Help

Call Created: 09/04/2013 08:50:58 LocationType: Carm

Qualifier: Address

**CFS #437 - Default Entry**

Call Location: Verified Point location

520 E MAIN ST

CARMEL HIGH SCHOOL 4TH AVE NE / LEXINGTON BLVD 2 car, obvious injury

Cross Streets: Contact Re

Accident - Injury - ALS (248)269-1000

Recommend (Accident - Injury - ALS)

Service Vehicle Rotation 6 Incidents

5.E911

0 Associated Calls 3 People

1 Narrative

Date	Type	Restriction	Entered By	Narrative
09/04/2013 08:54:22	User Entry	General	jerry	1 person complaining of arm injury
09/04/2013 08:53:59	User Entry	General	jerry	one subject bleeding from head injury
09/04/2013 08:53:31	User Entry	General	jerry	2 vehicle crash, obvious injuries

Command Line

Dispatch [UnitNumbers] [CallNumber] [SecondaryLocation]; [Disposition]; [Comment];

d e10 437

Default Call List (5 items) Pending Calls (5 items) - Cal... Busy Units (14 items) - Defa... Police Calls Only (3 items) -... Fire Calls Only (2 items)



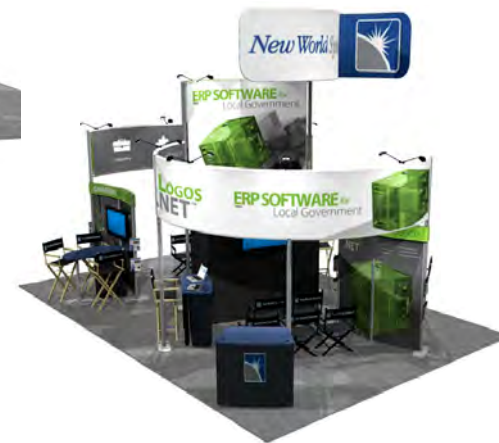
BRAND EXTENSIONS  
Tradeshow Booth



*Aegis Tradeshow Booth*



BRAND EXTENSIONS  
Tradeshow Booth



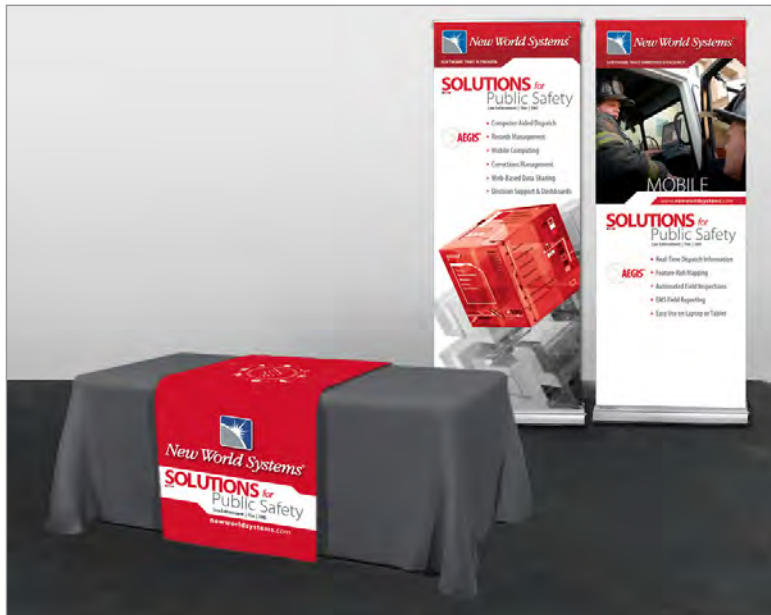
Logos Tradeshow Booth



## BRAND EXTENSIONS Banner Stands



Aegis Banner Stands & Table Runners



Aegis Fire Banner Stands & Table Runners



Logos Banner Stands & Table Runners



PRINT  
Trifold Brochures

COMPANY THAT'S STABLE.



**POSITIONED FOR LONG-TERM GROWTH**

- Partnerships with Our Customers
- Investments in Software
- Investments in Service and Support
- Investments in People

newworldsystems.com

30+ Years: Growth & Profitability  
Over 400 Employees & Growing  
20% Revenues Invested into R&D  
100% Owned by Employees  
Exclusively Public-Sector Applications  
Growing Customer Base and Market Share  
All Software Developed by New World Employees  
Never Discontinued a Product  
Centralized Support Center: 24x7  
Customer-Centric Business Model  
No Mergers or Acquisitions  
Windows Based Solutions  
Performance Bonds

**New World Systems**  
LAW ENFORCEMENT  
FIRE & EMS  
COMPUTER-AIDED  
DISPATCH  
RECORDS  
MANAGEMENT  
MOBILE  
COMPUTING &  
FIELD-BASED REPORTING  
**AEGIS**  
CORRECTIONS  
MANAGEMENT  
WEB-BASED  
INFORMATION SHARING  
DECISION SUPPORT  
& DASHBOARDS

newworldsystems.com/public-safety

City of Fayetteville Police & Fire  
Welcoming the Opportunity to be Your Public Safety Partner

**New World Systems**

© 2014 New World Systems Corporation. All rights reserved. New World Systems Logo is a registered trademark of New World Systems Corporation. All other company and product names may be trademarks of their respective owners. The information provided in this document, including cover image, is subject to change.

Aegis

COMPANY THAT'S STABLE.



**POSITIONED FOR LONG-TERM GROWTH**

- Partnerships with Our Customers
- Investments in Software
- Investments in Service and Support
- Investments in People

newworldsystems.com

30+ Years: Growth & Profitability  
Over 400 Employees & Growing  
20% Revenues Invested into R&D  
100% Owned by Employees  
Focused on Commercial-off-the-Shelf Software  
Exclusively Public-Sector Applications  
All Software Developed by New World Employees  
Never Discontinued a Product  
Centralized Support Center: 24 x 7  
Customer-Centric Business Model  
No Mergers or Acquisitions

**New World Systems**  
LAW ENFORCEMENT  
FIRE & EMS  
COMPUTER-AIDED  
DISPATCH  
RECORDS  
MANAGEMENT  
MOBILE  
COMPUTING &  
FIELD-BASED REPORTING  
**AEGIS**  
CORRECTIONS  
MANAGEMENT  
WEB-BASED  
INFORMATION SHARING  
DECISION SUPPORT  
& DASHBOARDS

newworldsystems.com

Visalia Fire Department  
Welcoming the Opportunity to be Your Public Safety Partner

**New World Systems**

© 2014 New World Systems Corporation. All rights reserved. New World Systems Logo is a registered trademark of New World Systems Corporation. All other company and product names may be trademarks of their respective owners. The information provided in this document, including cover image, is subject to change.

Aegis Fire

COMPANY THAT'S STABLE.



**POSITIONED FOR LONG-TERM GROWTH**

- Partnerships with Our Customers
- Investments in Software
- Investments in Service and Support
- Investments in People

newworldsystems.com

30+ Years: Growth & Profitability  
Over 400 Employees & Growing  
20% Revenues Invested into R&D  
100% Owned by Employees  
Standard Software Business Model  
Focus on Integrated Applications  
All Software Developed by New World Employees  
Never Discontinued a Product  
Centralized Support Center: 24 x 7  
Performance Bonds

**New World Systems**  
PUBLIC ADMIN  
HUMAN RESOURCES  
PAYROLL  
FINANCIAL  
MANAGEMENT  
COMMUNITY  
DEVELOPMENT  
**LOGOS**  
UTILITY  
MANAGEMENT  
WEB-BASED  
INFORMATION SHARING  
DECISION SUPPORT  
& DASHBOARDS

newworldsystems.com

Sacramento County  
California  
Welcoming the Opportunity to be Your Public Safety Partner

**New World Systems**

© 2014 New World Systems Corporation. All rights reserved. New World Systems Logo is a registered trademark of New World Systems Corporation. All other company and product names may be trademarks of their respective owners. The information provided in this document, including cover image, is subject to change.

Logos

\*\*If you would like a trifold brochure designed for a specific prospect, please submit requests to the Marketing team for us to personalize.